

NIKOLIN BRAHO

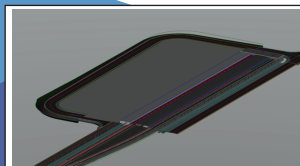
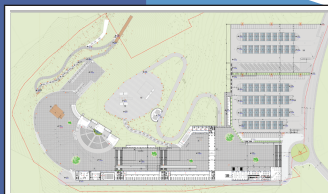
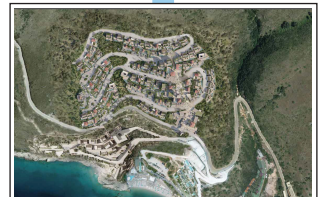
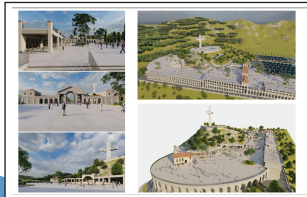
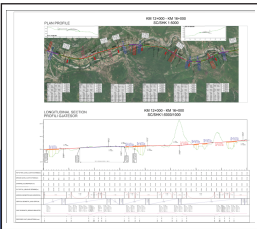
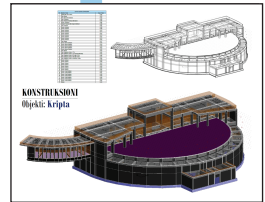
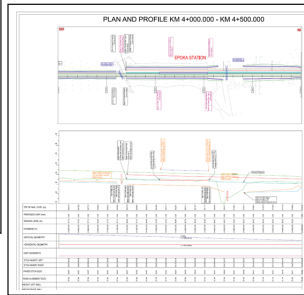
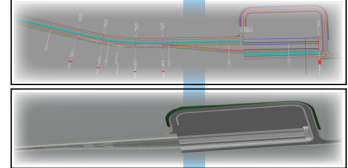
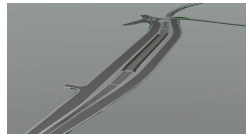
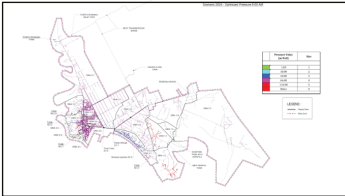
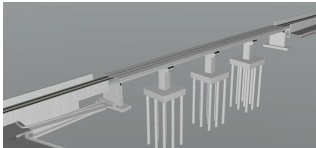
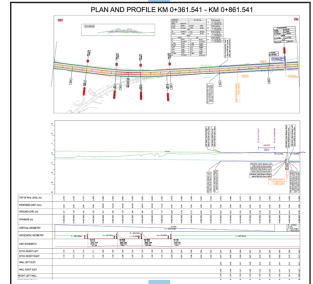
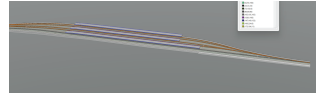
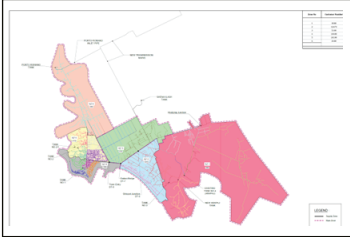
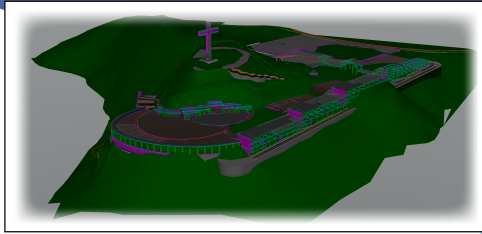
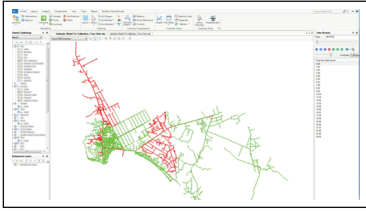
Civil Engineer

✉ nbraho@gmail.com

Infrastructure

Water & Railway Engineering

From Studies to Construction Design



NIKOLIN BRAHO

Civil Engineer – Transport Infrastructure, Railways & Roads
Independent Engineering Consultant
Tirana, Albania

PROFESSIONAL PROFILE

- Civil Engineer with solid experience in transport infrastructure projects, including **railways, roads, and water supply systems**, providing engineering consulting services from feasibility studies to detailed design and tender documentation.
- Experienced in cooperation with international engineering firms on complex infrastructure assignments, with a strong focus on **corridor review, alignment design (horizontal and vertical geometry), Digital Terrain Model (DTM) development, drainage and hydraulic systems**, and constructability-oriented solutions in line with international standards. Demonstrated ability to work independently while integrating effectively within multidisciplinary and international project teams.

CORE EXPERTISE

- Railway alignment design and optimization (horizontal & vertical geometry)
- Road alignment design and rehabilitation (urban & interurban)
- Transport corridor review and technical support
- Digital Terrain Model (DTM) development and data integration
- Drainage and hydraulic design for transport infrastructure
- Water supply systems and hydraulic modelling
- Preparation of technical documentation, BoQs, and specifications
- Design review, verification, and technical support

PROFESSIONAL EXPERIENCE

2018 – Present

- Since 2018, Nikolin Braho has been active as an **independent engineering** consultant, focusing on railway, road, and water supply infrastructure projects. His work has concentrated on railway corridor rehabilitation, alignment optimization, development of Digital Terrain Models (DTM), and preparation of preliminary and detailed design documentation, including cost estimation and tender support. Key assignments include the **Rrogozhinë - Fier - Vlorë Railway Rehabilitation**, the **Tirana - Durrës Railway and Airport Connection**, and feasibility input for the Durrës - Prishtina railway corridor.
- In parallel, he has provided hydraulic modelling and water supply design services, including network optimization, transmission pipeline verification, and preparation of detailed design and tender documentation for water infrastructure projects in Durrës and other municipalities. This period reflects continued integration of transport engineering and hydraulic expertise within multidisciplinary project environments.

Trans Adriatic Pipeline (TAP) Infrastructure Design Experience (2015 - 2018)

- Between 2015 and 2018, Nikolin Braho was involved as **Senior Design Engineer** in the Trans Adriatic Pipeline (TAP) project, contributing to infrastructure design and engineering assessment along approximately **200 km of pipeline corridor** in Albania. His work focused on corridor-based infrastructure engineering, including access roads, crossings over rivers and existing infrastructure, and structural assessment of bridges affected by the pipeline alignment. The work was carried out within a multidisciplinary international project environment, providing direct exposure to large-scale infrastructure standards and complex corridor engineering conditions.

Project Implementation Unit (PIU) Director World Bank Water Sector Programs (2006–2015)

- Between 2006 and 2015, Nikolin Braho served as **Head of the Project Implementation Unit (PIU)** for World Bank - financed water supply, wastewater, and environmental infrastructure programs in Albania. He was responsible for project preparation, procurement management, contract administration, and implementation monitoring in accordance with international financing and environmental safeguard requirements.
- The portfolio included the **Municipal Water and Wastewater Project (MWWP)** with emergency rehabilitation investments, the **Integrated Water and Ecosystem Management Project (IWEMP)** including wastewater treatment plants, the preparation of the **Water Supply Investment Project (WSIP)** involving approval of a major **DN700 water transmission pipeline (approx. 70 km)**, and the **Land Administration and Management Project (LAMP) - Component D**, including high-capacity pumping stations forming part of flood protection and drainage infrastructure.

Early Professional Experience (1998–2006)

- Between 1998 and 2006, Nikolin Braho developed his engineering foundation through site engineering, supervision, and infrastructure design roles with **ALCATEL Albania**, **DIWI & GICO International Consultants**, **A.N.K sh.p.k.**, and **Dr. Weisgerber & Partners (W&P)**. His work included infrastructure implementation and supervision, highway construction supervision on the **Rrogozhinë–Lushnje highway**, and participation in internationally funded water supply and sanitation projects such as the **Kavaja Water Supply Project (KfW financing)**, the **Tartu Water Supply Project in Estonia (EU/ISPA financing)**, and the **Water Supply and Sanitation Project in Burrel**. This period established a strong multidisciplinary background combining field experience with engineering design and coordination.

ACADEMIC BACKGROUND

- **Politecnico di Milano, Italy** Master Universitario di II Livello **BIM Management in Construction Works** (ongoing)
- **University of Tirana, Faculty of Civil Engineering, Albania** Diploma in Civil Engineering (Structural Engineering)

PROFESSIONAL ENDORSEMENTS

“ Nikolin Braho demonstrated a professional and structured approach during the ongoing project cooperation, providing technical input and support aligned with project requirements. His contribution facilitated smooth collaboration and effective progress of engineering activities. ”

Friedrich PICHLER
General Manager
ARE – Austria Rail Engineering

“ Mr. Braho contributed effectively to railway corridor review and alignment-related engineering tasks, supporting the development and refinement of technical solutions within an international project team. His work was carried out with consistency, technical clarity, and reliability throughout the cooperation. ”

Istvan BALAZS
Senior Manager
ILF Consulting Engineers

“ During the Jala development project, Mr. Braho provided structured and technically sound engineering input for road infrastructure and site development works. His contribution supported effective coordination between disciplines and the translation of design concepts into practical, constructible solutions throughout the project. ”

George GIANNAKAS
Project Coordinator

“ Mr. Braho provided technical support within the framework of infrastructure-related engineering services, contributing to coordination activities and the timely development of project tasks. His cooperation was characterized by clarity, responsiveness, and consistency. ”

Ioannis I. DEMAGOS
Technical Director
DROMOS Consulting

“ Mr. Braho worked as Senior Designer on multiple railway projects related to the Tirana–Durrës Railway Line. His responsibilities included alignment retracing, preparation of corridor design documentation, hydraulic design of culverts and channels, and the production of plan, profile, and cross-section drawings for the railway line. He also contributed to station design activities and demonstrated solid technical expertise, effective handling of complex tasks, and reliable coordination within the project team. ”

Andrea REITANO
Technical Director
INC S.p.A.



Railway Projects:

- **Rrogozhinë – Fier – Vlorë** Railway Rehabilitation
- Feasibility study and Preliminary Design of **Durres - Prishtine** Railway
- **Tirana – Durrës** Railway and Airport Connection
- **Tirana Urban** Railway Section (Terminal – City Station)

Water Supply & Hydraulics:

- **Durres** Water Supply Network Optimization
- Hydraulic Verification of Main Pipelines – **Durres**
- Technical Support for **Durres WSIP**

Roads & Civil Infrastructure:

- **Qukës – Qafë Pllocë** Road Corridor
- **Muzak Topia** Road – **Berat**

Buildings & Special Projects:

- **Shna Ndou Church** (Kisha e Laçit)
- **Shell Albania** – Drilling Sites Infrastructure
- **Jale Tourist & Residential Complex** (ongoing)

***Selected experience only.
Full project list and detailed
references are available upon request.***

1

**Roads
& Transport
Infrastructure**

2

**Railway
Engineering**

3

**Water Supply
&
Hydraulic Systems**

NB Engineering Consulting

CIVIL - INFRASTRUCTURE - ENVIRONMENT

www.nbengineeringNB.com

**Typical
Outputs**

**Buildings
&
Site
Infrastructure**

4

Nikolin BRAHO

📞 +355 68 20 60 415

✉ nbraho@gmail.com

5

